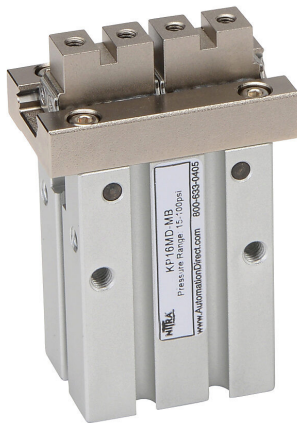


KP16MD-MB Cut Sheet



NITRA pneumatic gripper, parallel, double acting, 16mm bore, 6mm stroke, end mount grip, anodized aluminum body, M5 x 0.8 female ISO port(s).

For complete product information, please see this item on our store at the following link:



<https://www.automationdirect.com/pn/KP16MD-MB>

Technical Specifications

Brand	NITRA
Item	Gripper
Working Fluid	Air or inert gas
Grip Type	Parallel
Action Type	Double acting
Bore Diameter	16mm
Stroke	6mm
Grip Mount Style	End
Body Material	Anodized aluminum
Port Size	M5 x 0.8 female ISO
Repeatability	+/- 0.01mm
Cycle Rate	180 cyc/min
Resulting Gripper Travel	6mm

Agency Approvals

UL Listed File #	None
UL Recognized File #	None
UL Hazardous File #	None
CE	None
CSA File #	None
RoHS Status	No
EU REACH	View EU REACH document

Dimensional Drawings



2D Drawing PDF Link:
<https://cdn.automationdirect.com/static/drawings/KP16MD-MB.pdf>
See store item page for other formats.