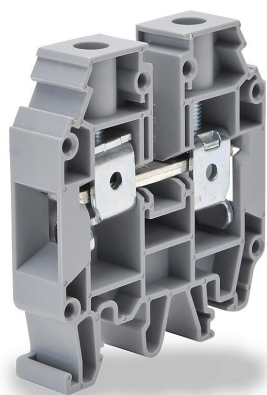


# KN-T4GRY Cut Sheet



Konnect-It screw single-level feedthrough terminal block, accepts wire size 12-4 AWG, gray, 80A, 35mm DIN rail mount, 100kA SCCR. Package of 50. For use with jumpers KN-2J4, KN-3J4, KN-4J4 and KN-10J4.

For complete product information, please see this item on our store at the following link:



<https://www.automationdirect.com/pn/KN-T4GRY>

## Technical Specifications

|                     |  |
|---------------------|--|
| Brand               | Konnect-It                                 |
| Item                | Terminal block                             |
| Connector Type      | Screw                                      |
| Terminal Block Type | Single-level feedthrough                   |
| Wire Size           | 12-4 AWG                                   |
| Color               | Gray                                       |
| Amperage Rating     | 80A  |
| Voltage Rating      | 600V rated (UL)                            |
| Mounting            | 35mm DIN rail                              |
| SCCR Rating         | 100kA SCCR                                 |
| Quantity per Pack   | 50   |
| For Use With        | Jumpers KN-2J4, KN-3J4, KN-4J4 and KN-10J4 |

## Agency Approvals

|                      |  |
|----------------------|--|
| UL Listed File #     | None                                   |
| UL Recognized File # | E179129                                |
| UL Hazardous File #  | None                                   |
| CE                   | <a href="#">View CE declarations</a>   |
| CSA File #           | None                                   |
| RoHS Status          | Yes (See CE Doc)                       |
| EU REACH             | <a href="#">View EU REACH document</a> |

## Dimensional Drawings



2D Drawing PDF Link:  
<https://cdn.automationdirect.com/static/drawings/KN-T4GRY.pdf>  
See store item page for other formats.