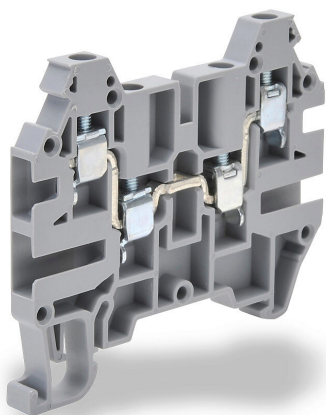


KN-T12SP4 Cut Sheet



Konnect-It screw common point single-level feedthrough terminal block, two-connection to two-connection, accepts wire size 26-12 AWG, gray, 20A, 35mm DIN rail mount, 100kA SCCR. Package of 100. For use with jumpers KN-2JM12, KN-3JM12, KN-4JM12 and KN-10JM12.

For complete product information, please see this item on our store at the following link:



<https://www.automationdirect.com/pn/KN-T12SP4>

Technical Specifications

Brand	Konnect-It
Item	Terminal block
Connector Type	Screw
Terminal Block Type	Common point single-level feedthrough
Terminal Block Special Feature(s)	Two-connection to two-connection
Wire Size	26-12 AWG
Color	Gray

Amperage Rating	20A
Voltage Rating	600V rated (UL)
Mounting	35mm DIN rail
SCCR Rating	100kA SCCR
Quantity per Pack	100
For Use With	Jumpers KN-2JM12, KN-3JM12, KN-4JM12 and KN-10JM12

Agency Approvals

UL Listed File #	None
UL Recognized File #	E179129
UL Hazardous File #	None
CE	View CE declarations
CSA File #	None
RoHS Status	Yes (See CE Doc)
EU REACH	View EU REACH document

Dimensional Drawings



2D Drawing PDF Link:
<https://cdn.automationdirect.com/static/drawings/KN-T12SP4.pdf>
See store item page for other formats.