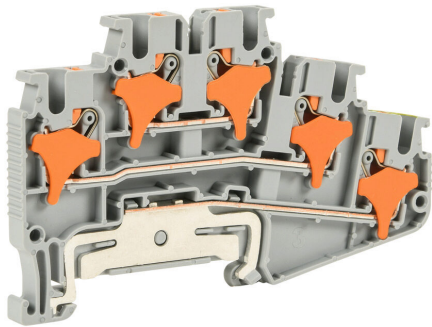


KN-PMD25-1-1-GND Cut Sheet



Konnect-It screwless compact feedthrough terminal block, double-level with ground, accepts wire size 28-12 AWG, gray, 20A, 150 VAC/VDC, 35mm DIN rail mount. Package of 50.

For complete product information, please see this item on our store at the following link:



<https://www.automationdirect.com/pn/KN-PMD25-1-1-GND>

Technical Specifications

Brand	Konnect-It
Item	Terminal block
Connector Type	Screwless
Terminal Block Type	Compact feedthrough
Number of Levels	2
Number of Inputs	2
Number of Outputs	2
Interior Connection Type	With ground
Wire Size	28-12 AWG

Color	Gray
Amperage Rating	20A
Voltage Rating	150 VAC/VDC
Mounting	35mm DIN rail
SCCR Rating	10kA SCCR
Quantity per Pack	50
For Use With	Jumpers KN-P2J25, KN-P3J25, KN-P4J25, KN-P5J25, KN-P10J25 and KN-P20J25

Agency Approvals

UL Listed File #	N/A
UL Recognized File #	E179129
UL Hazardous File #	N/A
CE	View CE declarations
CSA File #	N/A
RoHS Status	Yes (See CE Doc)
EU REACH	View EU REACH document

Dimensional Drawings



2D Drawing PDF Link:
<https://cdn.automationdirect.com/static/drawings/2d/KN-PMD25-1-1-GND.pdf>
See store item page for other formats.