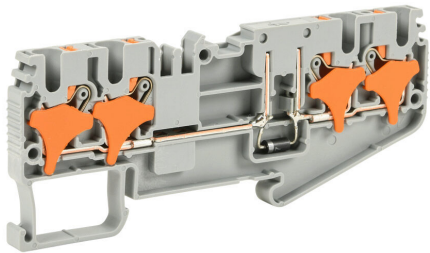


KN-P25CDB-2-2 Cut Sheet



Konnect-It screwless common point feedthrough terminal block, single-level, 2 inputs to 2 outputs bridged with diode, cathode on output, accepts wire size 28-12 AWG, gray, 1A, 300 VAC/VDC, 35mm DIN rail mount. Package of 50.

For complete product information, please see this item on our store at the following link:



<https://www.automationdirect.com/pn/KN-P25CDB-2-2>

Technical Specifications

Brand	Konnect-It
Item	Terminal block
Connector Type	Screwless
Terminal Block Type	Common point feedthrough
Number of Levels	1
Number of Inputs	2
Number of Outputs	2
Interior Connection Type	2 inputs to 2 outputs bridged with diode, cathode on output

Wire Size	28-12 AWG
Color	Gray
Amperage Rating	1A
Voltage Rating	300 VAC/VDC
Mounting	35mm DIN rail
SCCR Rating	10kA SCCR
Quantity per Pack	50
For Use With	Jumpers KN-P2J25, KN-P3J25, KN-P4J25, KN-P5J25, KN-P10J25 and KN-P20J25

Agency Approvals

UL Listed File #	N/A
UL Recognized File #	E179129
UL Hazardous File #	N/A
CE	View CE declarations
CSA File #	N/A
RoHS Status	Yes (See CE Doc)
EU REACH	View EU REACH document

Dimensional Drawings



2D Drawing PDF Link:
<https://cdn.automationdirect.com/static/drawings/2d/KN-P25CDB-2-2.pdf>
See store item page for other formats.