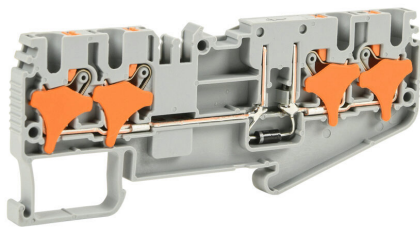


KN-P25CDB-2-2-25 Cut Sheet



Konnect-It screwless common point feedthrough terminal block, single-level, 2 inputs to 2 outputs bridged with diode, cathode on output, accepts wire size 28-12 AWG, gray, 1A, 300 VAC/VDC, 35mm DIN rail mount. Package of 25.

For complete product information, please see this item on our store at the following link:



<https://www.automationdirect.com/pn/KN-P25CDB-2-2-25>

Technical Specifications

Brand	Konnect-It	Wire Size	28-12 AWG
Item	Terminal block	Color	Gray
Connector Type	Screwless	Amperage Rating	1A
Terminal Block Type	Common point feedthrough	Voltage Rating	300 VAC/VDC
Number of Levels	1	Mounting	35mm DIN rail
Number of Inputs	2	SCCR Rating	10kA SCCR
Number of Outputs	2	Quantity per Pack	25
Interior Connection Type	2 inputs to 2 outputs bridged with diode, cathode on output	For Use With	Jumpers KN-P2J25, KN-P3J25, KN-P4J25, KN-P5J25, KN-P10J25 and KN-P20J25

Agency Approvals

UL Listed File #	N/A
UL Recognized File #	E179129
UL Hazardous File #	N/A
CE	View CE declarations
CSA File #	N/A
RoHS Status	Yes (See CE Doc)
EU REACH	View EU REACH document

Dimensional Drawings



2D Drawing PDF Link:
<https://cdn.automationdirect.com/static/drawings/2d/KN-P25CDB-2-2-25.pdf>
See store item page for other formats.