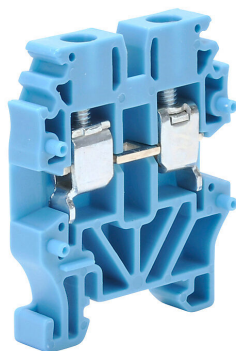


KN-M12BLU-25 Cut Sheet



Konnect-It screw mini single-level feedthrough terminal block, accepts wire size 26-12 AWG, blue, 20A, 15mm DIN rail mount, 100kA SCCR. Package of 25. For use with jumpers KN-2JM12, KN-3JM12, KN-4JM12 and KN-10JM12.

For complete product information, please see this item on our store at the following link:



<https://www.automationdirect.com/pn/KN-M12BLU-25>

Technical Specifications

Brand	Konnect-It
Item	Terminal block
Connector Type	Screw
Terminal Block Type	Mini single-level feedthrough
Wire Size	26-12 AWG
Color	Blue
Amperage Rating	20A
Voltage Rating	300V rated (UL)
Mounting	15mm DIN rail
SCCR Rating	100kA SCCR
Quantity per Pack	25
For Use With	Jumpers KN-2JM12, KN-3JM12, KN-4JM12 and KN-10JM12

Agency Approvals

UL Listed File #	None
UL Recognized File #	E179129
UL Hazardous File #	None
CE	View CE declarations
CSA File #	None
RoHS Status	Yes (See CE Doc)
EU REACH	View EU REACH document