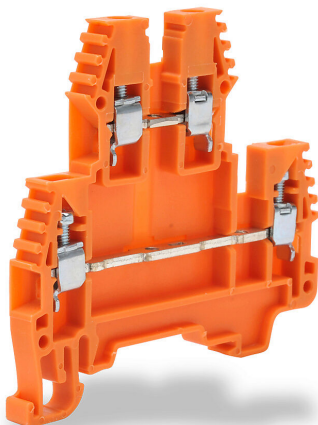


KN-D12ORG Cut Sheet



Konnect-It screw double-level feedthrough terminal block, accepts wire size 26-12 AWG, orange, 20A, 35mm DIN rail mount, 100kA SCCR. Package of 100. For use with jumpers KN-2J12, KN-3J12, KN-4J12 and KN-10J12.

For complete product information, please see this item on our store at the following link:



<https://www.automationdirect.com/pn/KN-D12ORG>

Technical Specifications

Brand	Konnect-It
Item	Terminal block
Connector Type	Screw
Terminal Block Type	Double-level feedthrough
Wire Size	26-12 AWG
Color	Orange
Amperage Rating	20A
Voltage Rating	300V rated (UL)
Mounting	35mm DIN rail
SCCR Rating	100kA SCCR
Quantity per Pack	100
For Use With	Jumpers KN-2J12, KN-3J12, KN-4J12 and KN-10J12

Agency Approvals

UL Listed File #	None
UL Recognized File #	E179129
UL Hazardous File #	None
CE	View CE declarations
CSA File #	None
RoHS Status	Yes (See CE Doc)
EU REACH	View EU REACH document

Dimensional Drawings



2D Drawing PDF Link:
<https://cdn.automationdirect.com/static/drawings/KN-D12ORG.pdf>
See store item page for other formats.