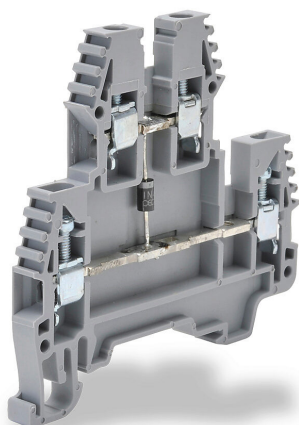


# KN-D12DR1 Cut Sheet



Konnect-It screw double-level feedthrough terminal block, connected between levels and diode, accepts wire size 26-12 AWG, gray, 20A, 35mm DIN rail mount, 100kA SCCR. Package of 20. For use with jumpers KN-2J12, KN-3J12, KN-4J12 and KN-10J12.

For complete product information, please see this item on our store at the following link:



<https://www.automationdirect.com/pn/KN-D12DR1>

## Technical Specifications

<b>Brand</b>	Konnect-It
<b>Item</b>	Terminal block
<b>Connector Type</b>	Screw
<b>Terminal Block Type</b>	Double-level feedthrough
<b>Terminal Block Special Feature(s)</b>	Connected between levels and diode
<b>Wire Size</b>	26-12 AWG
<b>Color</b>	Gray
<b>Amperage Rating</b>	20A
<b>Voltage Rating</b>	300V rated (UL)
<b>Mounting</b>	35mm DIN rail
<b>SCCR Rating</b>	100kA SCCR
<b>Quantity per Pack</b>	20
<b>For Use With</b>	Jumpers KN-2J12, KN-3J12, KN-4J12 and KN-10J12

## Agency Approvals

<b>UL Listed File #</b>	None
<b>UL Recognized File #</b>	E179129
<b>UL Hazardous File #</b>	None
<b>CE</b>	<a href="#">View CE declarations</a>
<b>CSA File #</b>	None
<b>RoHS Status</b>	Yes (See CE Doc)
<b>EU REACH</b>	<a href="#">View EU REACH document</a>