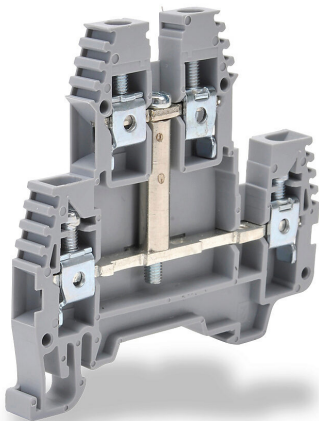


KN-D10X Cut Sheet



Konnect-It screw double-level feedthrough terminal block, connected between levels, accepts wire size 26-10 AWG, gray, 30A, 35mm DIN rail mount, 100kA SCCR. Package of 20. For use with jumpers KN-2J10, KN-3J10, KN-4J10 and KN-10J10.

For complete product information, please see this item on our store at the following link:



<https://www.automationdirect.com/pn/KN-D10X>

Technical Specifications

Brand	Konnect-It
Item	Terminal block
Connector Type	Screw
Terminal Block Type	Double-level feedthrough
Terminal Block Special Feature(s)	Connected between levels
Wire Size	26-10 AWG
Color	Gray
Amperage Rating	30A
Voltage Rating	300V rated (UL)
Mounting	35mm DIN rail
SCCR Rating	100kA SCCR
Quantity per Pack	20
For Use With	Jumpers KN-2J10, KN-3J10, KN-4J10 and KN-10J10

Agency Approvals

UL Listed File #	None
UL Recognized File #	E179129
UL Hazardous File #	None
CE	View CE declarations
CSA File #	None
RoHS Status	Yes (See CE Doc)
EU REACH	View EU REACH document

Dimensional Drawings



2D Drawing PDF Link:
<https://cdn.automationdirect.com/static/drawings/KN-D10X.pdf>
See store item page for other formats.