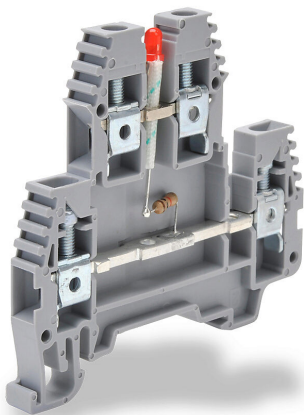


KN-D10LED-24DC Cut Sheet



Konnect-It screw double-level feedthrough terminal block, connected between levels and power indicator, accepts wire size 26-10 AWG, gray, 30A, 24 VDC LED indicator(s), 35mm DIN rail mount, 100kA SCCR. Package of 20.

For complete product information, please see this item on our store at the following link:



<https://www.automationdirect.com/pn/KN-D10LED-24DC>

Technical Specifications

Brand	Konnect-It
Item	Terminal block
Connector Type	Screw
Terminal Block Type	Double-level feedthrough
Terminal Block Special Feature(s)	Connected between levels and power indicator
Wire Size	26-10 AWG
Color	Gray

Amperage Rating	30A
Voltage Rating	300V rated (UL)
Indicator	24 VDC LED
Mounting	35mm DIN rail
SCCR Rating	100kA SCCR
Quantity per Pack	20
For Use With	Jumpers KN-2J10, KN-3J10, KN-4J10 and KN-10J10

Agency Approvals

UL Listed File #	None
UL Recognized File #	E179129
UL Hazardous File #	None
CE	View CE declarations
CSA File #	None
RoHS Status	Yes (See CE Doc)
EU REACH	View EU REACH document

Dimensional Drawings



2D Drawing PDF Link:
<https://cdn.automationdirect.com/static/drawings/KN-D10LED-24DC.pdf>
See store item page for other formats.