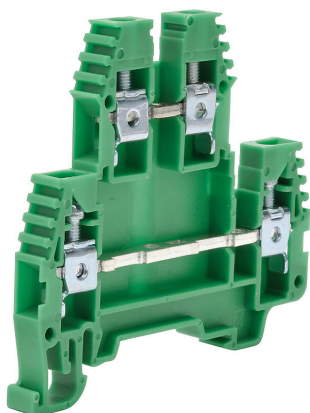


KN-D10GRN-25 Cut Sheet



Konnect-It screw double-level feedthrough terminal block, accepts wire size 26-10 AWG, green, 30A, 35mm DIN rail mount, 100kA SCCR. Package of 25. For use with jumpers KN-2J10, KN-3J10, KN-4J10 and KN-10J10.

For complete product information, please see this item on our store at the following link:



<https://www.automationdirect.com/pn/KN-D10GRN-25>

Technical Specifications

Brand	Konnect-It
Item	Terminal block
Connector Type	Screw
Terminal Block Type	Double-level feedthrough
Wire Size	26-10 AWG
Color	Green
Amperage Rating	30A
Voltage Rating	300V rated (UL)
Mounting	35mm DIN rail
SCCR Rating	100kA SCCR
Quantity per Pack	25
For Use With	Jumpers KN-2J10, KN-3J10, KN-4J10 and KN-10J10

Agency Approvals

UL Listed File #	None
UL Recognized File #	E179129
UL Hazardous File #	None
CE	View CE declarations
CSA File #	None
RoHS Status	Yes (See CE Doc)
EU REACH	View EU REACH document