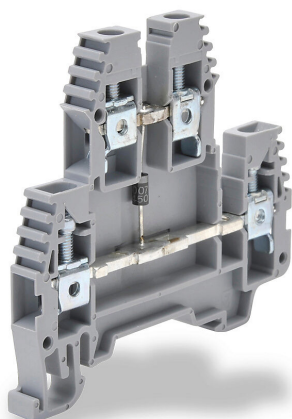


# KN-D10DR1 Cut Sheet



Konnect-It screw double-level feedthrough terminal block, connected between levels and diode, accepts wire size 26-10 AWG, gray, 30A, 35mm DIN rail mount, 100kA SCCR. Package of 20. For use with jumpers KN-2J10, KN-3J10, KN-4J10 and KN-10J10.

For complete product information, please see this item on our store at the following link:



<https://www.automationdirect.com/pn/KN-D10DR1>

## Technical Specifications

|  |  |
|--|--|
| <b>Brand</b>                             | Konnect-It                                     |
| <b>Item</b>                              | Terminal block                                 |
| <b>Connector Type</b>                    | Screw  |
| <b>Terminal Block Type</b>               | Double-level feedthrough                       |
| <b>Terminal Block Special Feature(s)</b> | Connected between levels and diode             |
| <b>Wire Size</b>                         | 26-10 AWG                                      |
| <b>Color</b>                             | Gray   |
| <b>Amperage Rating</b>                   | 30A  |
| <b>Voltage Rating</b>                    | 300V rated (UL)                                |
| <b>Mounting</b>                          | 35mm DIN rail                                  |
| <b>SCCR Rating</b>                       | 100kA SCCR                                     |
| <b>Quantity per Pack</b>                 | 20   |
| <b>For Use With</b>                      | Jumpers KN-2J10, KN-3J10, KN-4J10 and KN-10J10 |

## Agency Approvals

|                             |  |
|-----------------------------|--|
| <b>UL Listed File #</b>     | None                                   |
| <b>UL Recognized File #</b> | E179129                                |
| <b>UL Hazardous File #</b>  | None                                   |
| <b>CE</b>                   | <a href="#">View CE declarations</a>   |
| <b>CSA File #</b>           | None                                   |
| <b>RoHS Status</b>          | Yes (See CE Doc)                       |
| <b>EU REACH</b>             | <a href="#">View EU REACH document</a> |