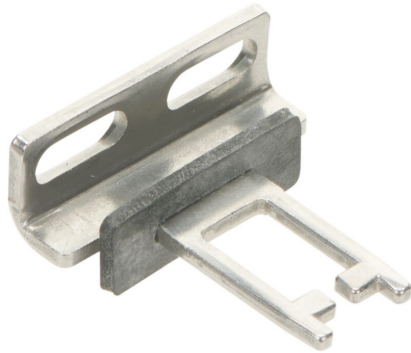


KEY3 Cut Sheet



Comepi actuator tongue (key), 90 degree mounting tab with 22mm mounting hole spacing mount, 316 stainless steel. For use with Comepi SP2K and SDM2K series safety switches.

For complete product information, please see this item on our store at the following link:



<https://www.automationdirect.com/pn/KEY3>

Technical Specifications

Brand	Comepi
Item	Actuator tongue (key)
Replacement	No
Shock Absorbing	No
Mounting	90 degree mounting tab with 22mm mounting hole spacing
Material	316 stainless steel
For Use With	Comepi SP2K and SDM2K series safety switches

Agency Approvals

UL Listed File #	None
UL Recognized File #	None
UL Hazardous File #	None
CSA File #	None
RoHS Status	Meets RoHS Chemical Restrictions - No CE (See RoHS Statement Below)
EU REACH	View EU REACH document
Other	RoHS Statement