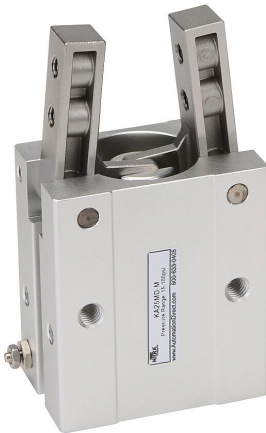


KA25MD-M Cut Sheet



NITRA pneumatic gripper, angular, double acting, 25mm bore, 30 degrees open position, -10 degrees closed position, side mount grip, anodized aluminum body, M5 x 0.8 threaded port(s).

For complete product information, please see this item on our store at the following link:



<https://www.automationdirect.com/pn/KA25MD-M>

Technical Specifications

Brand	NITRA
Item	Gripper
Working Fluid	Pneumatic
Grip Type	Angular
Action Type	Double acting
Bore Diameter	25mm
Open Position	30 degrees
Closed Position	-10 degrees
Grip Mount Style	Side
Body Material	Anodized aluminum
Port Information	M5 x 0.8 threaded
Cycle Rate	180 cyc/min
Maximum Distance to Grip Point	70mm

Agency Approvals

UL Listed File #	None
UL Recognized File #	None
UL Hazardous File #	None
CE	None
CSA File #	None
RoHS Status	No
EU REACH	View EU REACH document