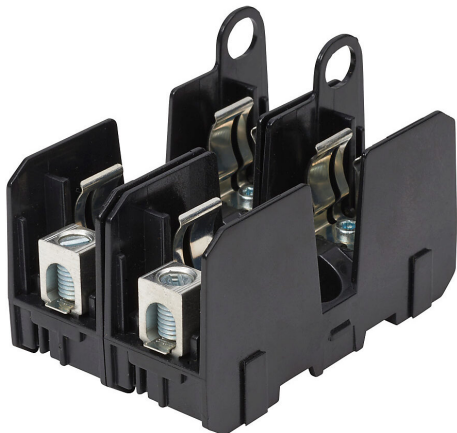


# JM60030-2CR Cut Sheet



Bussmann modular fuse block, accepts J fuses, 30A, 600V, 2-pole, 14-2 AWG copper or 8-2 AWG aluminum, box lug, 35mm DIN rail or panel mount.

For complete product information, please see this item on our store at the following link:



<https://www.automationdirect.com/pn/JM60030-2CR>

## Technical Specifications

Brand	Bussmann
Item	Fuse block
Modular	Yes
Blown Fuse Indicator	No
Multi-Wire	No
Accepts Fuse Class	J
Amperage Rating	30A
Voltage Rating	600V

Number of Poles	2
Conductor Size	14-2 AWG copper or 8-2 AWG aluminum
Conductor Connection Type	Box lug
SCCR Rating	200kA SCCR
Fuse Connection Type	Clip with reinforced spring
Mounting	35mm DIN rail or panel
Additional Information	Covers sold separately

## Agency Approvals

UL Listed File #	E14853
UL Recognized File #	None
UL Hazardous File #	None
CE	<a href="#">View CE declarations</a>
CSA File #	47235-6225-01
RoHS Status	No
EU REACH	<a href="#">View EU REACH document</a>
Other	None

## Dimensional Drawings



2D Drawing PDF Link:  
<https://cdn.automationdirect.com/static/drawings/JM60030-2CR.pdf>  
See store item page for other formats.