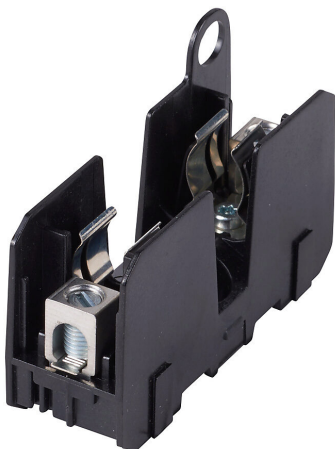


JM60030-1CR Cut Sheet



Bussmann modular fuse block, accepts J fuses, 30A, 600V, 1-pole, 14-2 AWG copper or 8-2 AWG aluminum, box lug, 35mm DIN rail or panel mount.

For complete product information, please see this item on our store at the following link:



<https://www.automationdirect.com/pn/JM60030-1CR>

Technical Specifications

Brand	Bussmann
Item	Fuse block
Modular	Yes
Blown Fuse Indicator	No
Multi-Wire	No
Accepts Fuse Class	J
Amperage Rating	30A
Voltage Rating	600V

Number of Poles	1
Conductor Size	14-2 AWG copper or 8-2 AWG aluminum
Conductor Connection Type	Box lug
SCCR Rating	200kA SCCR
Fuse Connection Type	Clip with reinforced spring
Mounting	35mm DIN rail or panel
Additional Information	Covers sold separately

Agency Approvals

UL Listed File #	E14853
UL Recognized File #	None
UL Hazardous File #	None
CE	View CE declarations
CSA File #	47235-6225-01
RoHS Status	No
EU REACH	View EU REACH document
Other	None

Dimensional Drawings



2D Drawing PDF Link:
<https://cdn.automationdirect.com/static/drawings/JM60030-1CR.pdf>
See store item page for other formats.