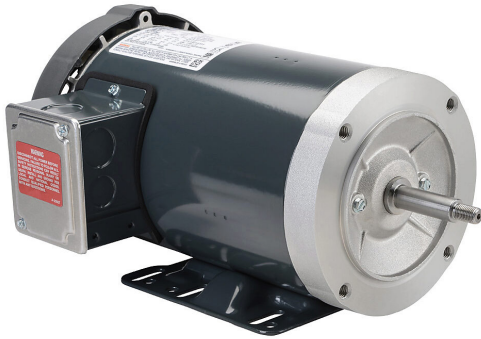


J065A Cut Sheet



Marathon premium efficiency AC induction motor, centrifugal jet pump and inverter rated, 2hp, 3-phase, 230/460 VAC, suitable for 208 VAC at 60 Hz, 3600rpm, TEFC, 56J frame, rolled steel, C-face/ rigid base mount.

For complete product information, please see this item on our store at the following link:



<https://www.automationdirect.com/pn/J065A>

Technical Specifications

| | | | |
|--------------------------|--|---------------------------------|-----------------------------|
| Brand | Marathon | Shaft Diameter | 5/8in |
| Item | Motor | Shaft Material | 416 stainless (C-503) steel |
| Efficiency Group | Premium efficiency | Motor Frame | 56J |
| Efficiency | 85.5 | Frame Material | Rolled steel |
| Voltage Type | AC | Electrically Reversible | Yes |
| Motor Type | Induction | Insulation Class | Class B |
| Motor Application | Centrifugal jet pump and inverter rated | IP Rating | IP43 |
| Horsepower Rating | 2hp | Service Factor | 1.15 |
| Number of Phases | 3 | Integrated Brake | No |
| Voltage Rating | 230/460 VAC, suitable for 208 VAC at 60 Hz | NEMA Design | Design B |
| Synchronous Speed | 3600rpm | Junction Box Orientation | F1 |
| Nameplate RPM | 3450rpm | Mounting | C-face/rigid base |
| Overload Type | None | Mounting Orientation | Horizontal |
| Enclosure Type | TEFC | Manufacturer Part Number | 056T34F15592 |
| Shaft Type | Round threaded 20 UNF-2A | | |

Agency Approvals

| | |
|-----------------------------|--|
| UL Listed File # | None |
| UL Recognized File # | E49747 |
| UL Hazardous File # | None |
| CE | View CE declarations |
| CSA File # | LR2025 |
| RoHS Status | No |
| EU REACH | View EU REACH document |