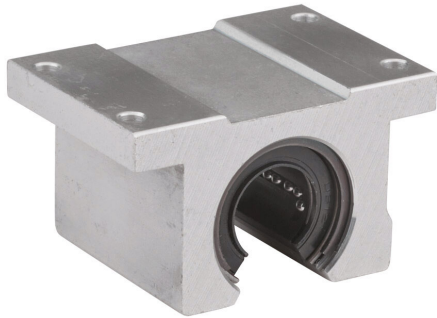


IPPN12G Cut Sheet



PBC IPP series single pillow block, full ball recirculating bearing, 1.88in overall length, steel, 3/4in inside diameter, aluminum housing. For use with 3/4in diameter PBC shafts.

For complete product information, please see this item on our store at the following link:



<https://www.automationdirect.com/pn/IPPN12G>

Technical Specifications

Brand	PBC
Item	Single pillow block
Series	IPP
Block Type	Open type
Overall Length	1.88in
Bearing Type	Full ball recirculating bearing
Bearing Material	Steel
Housing Fit	Self-aligning
Bearing Inside Diameter	3/4in
Housing Material	Aluminum
For Use With	3/4in diameter PBC shafts

Agency Approvals

UL Listed File #	None
UL Recognized File #	None
UL Hazardous File #	None
CE	None
CSA File #	None
RoHS Status	Meets RoHS Chemical Restrictions - No CE (See RoHS Statement Below)
EU REACH	View EU REACH document
Other	RoHS Statement

Dimensional Drawings



2D Drawing PDF Link:
<https://cdn.automationdirect.com/static/drawings/2d/IPPN12G.pdf>
See store item page for other formats.