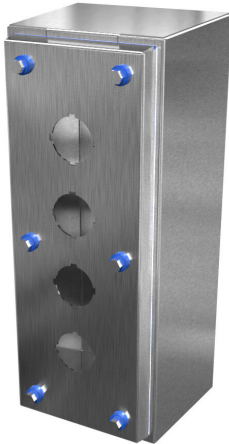


HYPB4VSS Cut Sheet



Hammond sanitary pushbutton enclosure, 4 holes, 30mm, slope top, NEMA 3R/4/4X/12, 12 x 5 x 4in (HxWxD), wall mount, 304 stainless steel, #4 brush finish, screw cover.

For complete product information, please see this item on our store at the following link:



<https://www.automationdirect.com/pn/HYPB4VSS>

Technical Specifications

Brand	Hammond
Item	Sanitary pushbutton enclosure
Number of Pushbutton Holes	4 holes
Pushbutton Hole Nominal Size	30mm
Slope Top	Yes
NEMA Rating	3R/4/4X/12
IP Rating	IP69K
Nominal Enclosure Dimensions	12 x 5 x 4in (HxWxD)
Enclosure Height	11.94in
Enclosure Width	4.98in

Enclosure Depth	4.53in
Mounting	Wall
Integral Mounting Feet	No
Integral Mounting Flange	No
Dual Access	No
Knockouts	No
Material	304 stainless steel
Finish	#4 brush
Cover Type	Screw cover
Padlockable	No
Keylocking	No

Agency Approvals

UL Listed File #	E517628/E65324
UL Recognized File #	None
UL Hazardous File #	None
CE	View CE declarations
CSA File #	None
RoHS Status	Yes (See CE Doc)
EU REACH	View EU REACH document

Dimensional Drawings



2D Drawing PDF Link:
<https://cdn.automationdirect.com/static/drawings/HYPB4VSS.pdf>
See store item page for other formats.