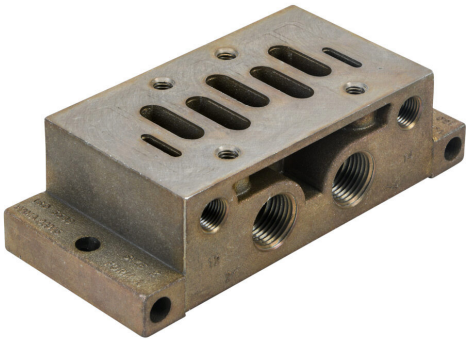


# HSB-2SN Cut Sheet



NITRA air stand-alone base, aluminum alloy, 145 psi (10 bar) maximum operating pressure, 3/8in female NPT inlet(s), 3/8in female NPT outlet(s), 3/8in female NPT exhaust(s), side orientation. For use with ISO 5599/1 size 2 solenoid valves.

For complete product information, please see this item on our store at the following link:



<https://www.automationdirect.com/pn/HSB-2SN>

## Technical Specifications

Brand	NITRA
Item	Stand-alone base
Working Fluid	Air
Material	Aluminum alloy
Maximum Operating Pressure	145 psi (10 bar)
Inlet Port	3/8in female NPT
Outlet Port	3/8in female NPT
Exhaust Port	3/8in female NPT
Hole Orientation	Side
For Use With	ISO 5599/1 size 2 solenoid valves

## Agency Approvals

UL Listed File #	None
UL Recognized File #	None
UL Hazardous File #	None
CSA File #	None
RoHS Status	No
EU REACH	<a href="#">View EU REACH document</a>

## Dimensional Drawings



2D Drawing PDF Link:  
<https://cdn.automationdirect.com/static/drawings/2d/HSB-2SN.pdf>  
See store item page for other formats.