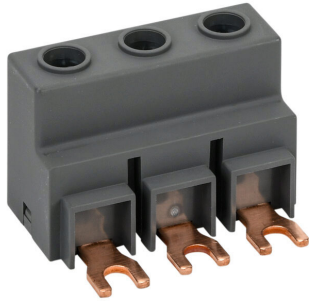


HPX1-PTB-MP Cut Sheet



IronHorse incoming power terminal block, 3-pole, 64A, 12-4 AWG. For use with HPX1-BB3P busbars. For incoming power to busbar system.

For complete product information, please see this item on our store at the following link:



<https://www.automationdirect.com/pn/HPX1-PTB-MP>

Technical Specifications

Brand	IronHorse
Terminal Block Type	Incoming power
Item	Terminal block
Replacement	No
Number of Poles	3
Amperage Rating	64A
Conductor Size	12-4 AWG
For Use With	HPX1-BB3P busbars
Application	For incoming power to busbar system

Agency Approvals

UL Listed File #	E195426
CE	View CE declarations
CSA File #	None
RoHS Status	Yes (See CE Doc)
EU REACH	View EU REACH document

Dimensional Drawings



2D Drawing PDF Link:
<https://cdn.automationdirect.com/static/drawings/2d/HPX1-PTB-MP.pdf>
See store item page for other formats.