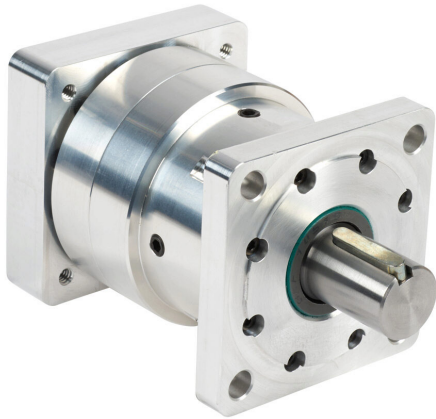


HPGCN34-5050 Cut Sheet



SureGear high-precision strain wave gearbox, 50:1 ratio, inline, 1in diameter output shaft, nominal output torque 40 N-m (354 lb-in), 1-stage, NEMA 34 frame. For use with SureStep NEMA 34 motors.

For complete product information, please see this item on our store at the following link:



<https://www.automationdirect.com/pn/HPGCN34-5050>

Technical Specifications

Brand	SureGear
Item	Gearbox
Application	High-precision
Gearbox Type	Strain wave
Gear Ratio	50:1
Output Configuration	Inline
Gearbox Output Shaft Diameter	1in
Nominal Output Torque	Nominal output torque 40 N-m (354 lb-in)
Number of Stages	1
Frame	NEMA 34
For Use With	SureStep NEMA 34 motors
Includes	Motor mounting hardware and output shaft key

Agency Approvals

UL Listed File #	None
UL Recognized File #	None
UL Hazardous File #	None
CE	None
CSA File #	None
RoHS Status	No
EU REACH	View EU REACH document

Dimensional Drawings



2D Drawing PDF Link:
<https://cdn.automationdirect.com/static/drawings/HPGCN34-5050.pdf>
See store item page for other formats.