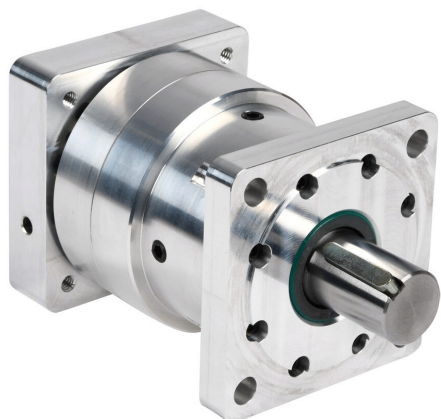


HPGCN34-16050 Cut Sheet



SureGear high-precision strain wave gearbox, 160:1 ratio, inline, 1in diameter output shaft, nominal output torque 50 N-m (443 lb-in), 1-stage, NEMA 34 frame. For use with SureStep NEMA 34 motors.

For complete product information, please see this item on our store at the following link:



<https://www.automationdirect.com/pn/HPGCN34-16050>

Technical Specifications

| | |
|--------------------------------------|--|
| Brand | SureGear |
| Item | Gearbox |
| Application | High-precision |
| Gearbox Type | Strain wave |
| Gear Ratio | 160:1 |
| Output Configuration | Inline |
| Gearbox Output Shaft Diameter | 1in |
| Nominal Output Torque | Nominal output torque 50 N-m (443 lb-in) |
| Number of Stages | 1 |
| Frame | NEMA 34 |
| For Use With | SureStep NEMA 34 motors |
| Includes | Motor mounting hardware and output shaft key |

Agency Approvals

| | |
|-----------------------------|--|
| UL Listed File # | None |
| UL Recognized File # | None |
| UL Hazardous File # | None |
| CE | None |
| CSA File # | None |
| RoHS Status | No |
| EU REACH | View EU REACH document |