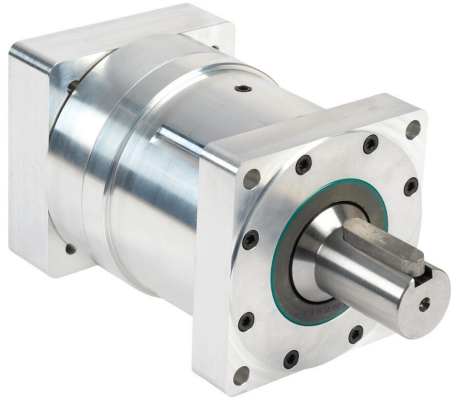


HPGA116-50A4 Cut Sheet



SureGear high-precision strain wave gearbox, 50:1 ratio, inline, 32mm diameter output shaft, nominal output torque 100 N-m (885 lb-in), 1-stage, 116mm frame. For use with SureServo and SureServo2 SV(2)L-210(B) motors.

For complete product information, please see this item on our store at the following link:



<https://www.automationdirect.com/pn/HPGA116-50A4>

Technical Specifications

Brand	SureGear
Item	Gearbox
Application	High-precision
Gearbox Type	Strain wave
Gear Ratio	50:1
Output Configuration	Inline
Gearbox Output Shaft Diameter	32mm
Nominal Output Torque	Nominal output torque 100 N-m (885 lb-in)
Number of Stages	1
Frame	116mm
For Use With	SureServo and SureServo2 SV(2)L-210(B) motors
Includes	Motor mounting hardware and output shaft key

Agency Approvals

UL Listed File #	None
UL Recognized File #	None
UL Hazardous File #	None
CE	None
CSA File #	None
RoHS Status	No
EU REACH	View EU REACH document