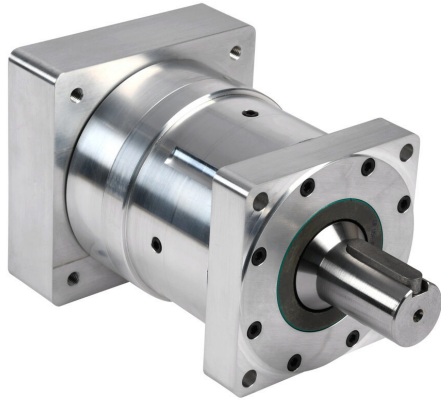


# HPGA116-200A5 Cut Sheet



SureGear high-precision strain wave gearbox, 200:1 ratio, inline, 32mm diameter output shaft, nominal output torque 120 N-m (1062 lb-in), 1-stage, 116mm frame. For use with SureServo SVM-210(B) motors.

For complete product information, please see this item on our store at the following link:



<https://www.automationdirect.com/pn/HPGA116-200A5>

## Technical Specifications

<b>Brand</b>	SureGear
<b>Item</b>	Gearbox
<b>Application</b>	High-precision
<b>Gearbox Type</b>	Strain wave
<b>Gear Ratio</b>	200:1
<b>Output Configuration</b>	Inline
<b>Gearbox Output Shaft Diameter</b>	32mm
<b>Nominal Output Torque</b>	Nominal output torque 120 N-m (1062 lb-in)
<b>Number of Stages</b>	1
<b>Frame</b>	116mm
<b>For Use With</b>	SureServo SVM-210(B) motors
<b>Includes</b>	Motor mounting hardware and output shaft key

## Agency Approvals

<b>UL Listed File #</b>	None
<b>UL Recognized File #</b>	None
<b>UL Hazardous File #</b>	None
<b>CE</b>	None
<b>CSA File #</b>	None
<b>RoHS Status</b>	No
<b>EU REACH</b>	<a href="#">View EU REACH document</a>

## Dimensional Drawings



2D Drawing PDF Link:  
<https://cdn.automationdirect.com/static/drawings/2d/HPGA116-200A5.pdf>  
See store item page for other formats.