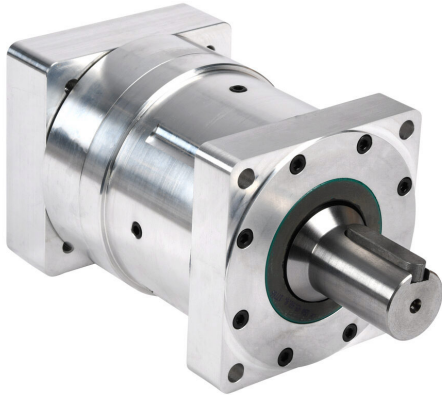


HPGA116-135A4 Cut Sheet



SureGear high-precision strain wave gearbox, 135:1 ratio, inline, 32mm diameter output shaft, nominal output torque 120 N-m (1062 lb-in), 1-stage, 116mm frame. For use with SureServo and SureServo2 SV(2)L-210(B) motors.

For complete product information, please see this item on our store at the following link:



<https://www.automationdirect.com/pn/HPGA116-135A4>

Technical Specifications

Brand	SureGear
Item	Gearbox
Application	High-precision
Gearbox Type	Strain wave
Gear Ratio	135:1
Output Configuration	Inline
Gearbox Output Shaft Diameter	32mm
Nominal Output Torque	Nominal output torque 120 N-m (1062 lb-in)
Number of Stages	1
Frame	116mm
For Use With	SureServo and SureServo2 SV(2)L-210(B) motors
Includes	Motor mounting hardware and output shaft key

Agency Approvals

UL Listed File #	None
UL Recognized File #	None
UL Hazardous File #	None
CE	None
CSA File #	None
RoHS Status	No
EU REACH	View EU REACH document

Dimensional Drawings



2D Drawing PDF Link:
<https://cdn.automationdirect.com/static/drawings/HPGA116-135A4.pdf>
See store item page for other formats.