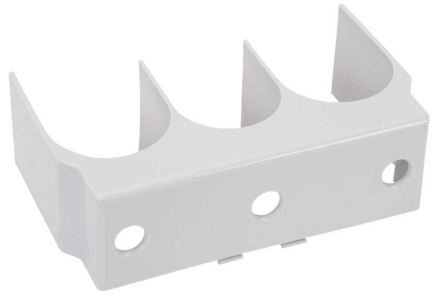


HMx2-TMC-CR Cut Sheet



IronHorse terminal shroud, line and load side, 3-pole. Package of 2. For use with HMC-265 to HMC-400 contactors.

For complete product information, please see this item on our store at the following link:



<https://www.automationdirect.com/pn/HMX2-TMC-CR>

Technical Specifications

Brand	IronHorse
Item	Terminal shroud
Cover Type	Line and load side
Blown Fuse Indicator	No
Number of Poles	3
Quantity per Pack	2
For Use With	HMC-265 to HMC-400 contactors

Agency Approvals

UL Listed File #	None
CE	None
CSA File #	None
RoHS Status	No
EU REACH	View EU REACH document