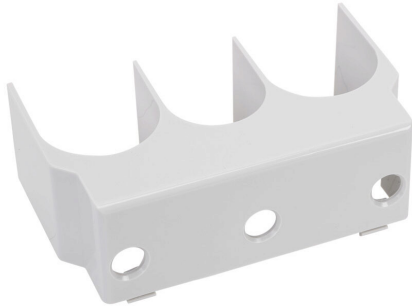


HMX1-TMC-CR Cut Sheet



IronHorse terminal shroud, line and load side, 3-pole. Package of 2. For use with HMC-185 and HMC-225 contactors.

For complete product information, please see this item on our store at the following link:



<https://www.automationdirect.com/pn/HMX1-TMC-CR>

Technical Specifications

Brand	IronHorse
Item	Terminal shroud
Cover Type	Line and load side
Number of Poles	3
Quantity per Pack	2
For Use With	HMC-185 and HMC-225 contactors

Agency Approvals

UL Listed File #	None
CE	None
CSA File #	None
RoHS Status	No
EU REACH	View EU REACH document