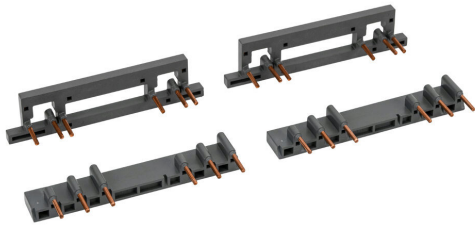


# HMX1-BBREV Cut Sheet

IronHorse reversing connection kit, for use with HMC-9 to HMC-22 contactors, includes line and loadside connection bars.

For complete product information, please see this item on our store at the following link:



<https://www.automationdirect.com/pn/HMX1-BBREV>

---

## Technical Specifications

<b>Brand</b>	IronHorse
<b>Item</b>	Reversing connection kit
<b>For Use With</b>	HMC-9 to HMC-22 contactors
<b>Kit Includes</b>	Line and loadside connection bars

---

## Agency Approvals

<b>UL Listed File #</b>	E191059
<b>CE</b>	<a href="#">View CE declarations</a>
<b>CSA File #</b>	None
<b>RoHS Status</b>	Yes (See CE Doc)
<b>EU REACH</b>	<a href="#">View EU REACH document</a>