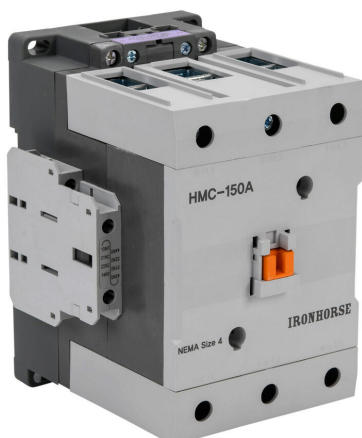


# HMC-150A30-22-GL Cut Sheet



IronHorse IEC contactor, 150A, (3) N.O. power poles, (2) N.O./ (2) N.C. auxiliary contacts, 24-48VAC (50/60Hz)/24-48 VDC coil voltage, low consumption electronic.

For complete product information, please see this item on our store at the following link:



<https://www.automationdirect.com/pn/HMC-150A30-22-GL>

## Technical Specifications

<b>Brand</b>	IronHorse
<b>Item</b>	Contactor
<b>Contactor Type</b>	IEC
<b>Actuator Type</b>	Magnetic
<b>Amperage Rating</b>	150A
<b>Power Poles</b>	(3) N.O.
<b>Auxiliary Contacts</b>	(2) N.O./ (2) N.C.
<b>Coil Voltage</b>	24-48VAC (50/60Hz)/24-48 VDC
<b>Coil Type</b>	Low consumption electronic
<b>Horsepower Rating</b>	100hp
<b>SCCR Rating</b>	10kA SCCR
<b>Mounting</b>	35mm DIN rail or panel

## Agency Approvals

<b>UL Listed File #</b>	E191059
<b>CE</b>	<a href="#">View CE declarations</a>
<b>CSA File #</b>	None
<b>RoHS Status</b>	Yes (See CE Doc)
<b>EU REACH</b>	<a href="#">View EU REACH document</a>

## Dimensional Drawings



2D Drawing PDF Link:  
<https://cdn.automationdirect.com/static/drawings/2d/HMC-150A30-22-GL.pdf>  
See store item page for other formats.