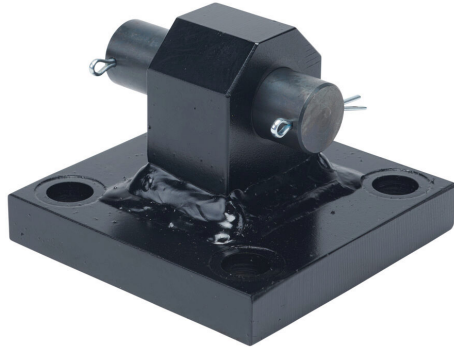


HM21325-6 Cut Sheet



Peninsular rear pivot eye, steel. For use with 3-1/4in bore hydraulic NFPA cylinders. Mounting hardware included.

For complete product information, please see this item on our store at the following link:



<https://www.automationdirect.com/pn/HM21325-6>

Technical Specifications

Brand	Peninsular
Item	Rear pivot eye
Material	Steel
For Use With	3-1/4in bore hydraulic NFPA cylinders
Includes	Mounting hardware

Agency Approvals

UL Listed File #	None
UL Recognized File #	None
UL Hazardous File #	None
CSA File #	None
RoHS Status	No
EU REACH	View EU REACH document

Dimensional Drawings



2D Drawing PDF Link:
<https://cdn.automationdirect.com/static/drawings/2d/HM21325-6.pdf>
See store item page for other formats.