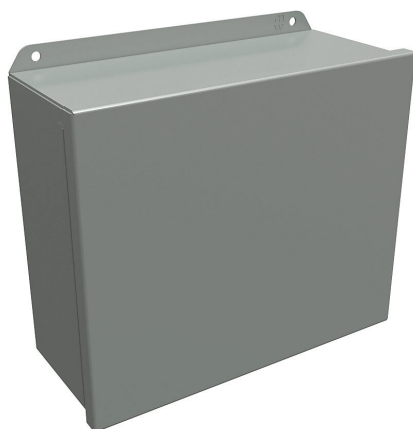


HJ10125HLP Cut Sheet



Hammond enclosure, NEMA 3R/4/12/13, 10 x 12 x 5in (HxWxD), wall mount, carbon steel, ANSI 61 gray, powder coat finish, single-door, stainless steel clamps.

For complete product information, please see this item on our store at the following link:



<https://www.automationdirect.com/pn/HJ10125HLP>

Technical Specifications

Brand	Hammond
Item	Enclosure
Subpanel	Purchase subpanel separately
Slope Top	No
NEMA Rating	3R/4/12/13
IP Rating	IP66
Nominal Enclosure Dimensions	10 x 12 x 5in (HxWxD)
Enclosure Height	10.31in
Enclosure Width	12.31in
Enclosure Depth	5.20in
Mounting	Wall
Integral Mounting Feet	No
Integral Mounting Flange	Yes

Dual Access	No
Knockouts	No
Material	Carbon steel
Color	ANSI 61 gray
Finish	Powder coat
Cover Type	Single-door
Hinge Type	Continuous hinge
Number of Hinges Per Door	1
Latch Type	Stainless steel clamps
Number Of Latches	2
Padlockable	No
Keylocking	No

Agency Approvals

UL Listed File #	E65324
UL Recognized File #	None
UL Hazardous File #	None
CE	View CE declarations
CSA File #	LR21001
RoHS Status	Yes (See CE Doc)
EU REACH	View EU REACH document