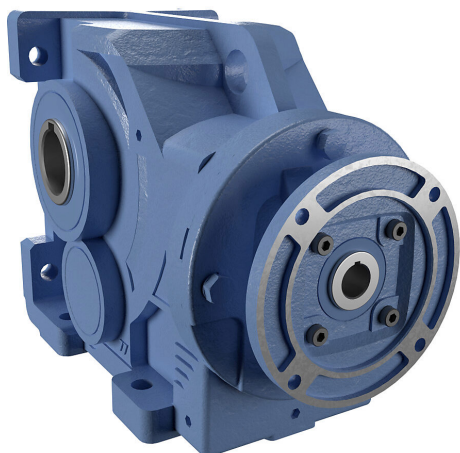


HBR-77-080-B Cut Sheet



IronHorse heavy-duty helical bevel gearbox, 80:1 ratio, 143/5TC-Face input, hollow, 2in diameter output shaft, nominal 2hp at 2.69 SF, 13710 lb-in mechanical output torque, Type-77 frame, cast iron housing, vertical or horizontal mount.

For complete product information, please see this item on our store at the following link:



<https://www.automationdirect.com/pn/HBR-77-080-B>

Technical Specifications

| | |
|--------------------------------------|-----------------------------------|
| Brand | IronHorse |
| Item | Gearbox |
| Application | General purpose |
| Duty Rating | Heavy-duty |
| Gearbox Type | Helical bevel |
| Gear Ratio | 80:1 |
| Speed Rating | 1750rpm input / 22rpm output |
| Input Configuration | 143/5TC-Face |
| Input Power Rating | Nominal 2hp at 2.69 SF |
| Output Configuration | Hollow |
| Gearbox Output Shaft Diameter | 2in |
| Mechanical Output Torque | 13710 lb-in |
| Frame | Type-77 |
| Housing Material | Cast iron |
| Mounting | Vertical or horizontal |
| Finish | Anti-corrosion primer and paint |
| Lubrication Type | Pre-filled with HD320 mineral oil |
| Oil Seal Type | Double-lip |

Agency Approvals

| | |
|-----------------------------|--|
| UL Listed File # | none |
| UL Recognized File # | none |
| UL Hazardous File # | none |
| CE | None |
| CSA File # | none |
| RoHS Status | No |
| EU REACH | View EU REACH document |