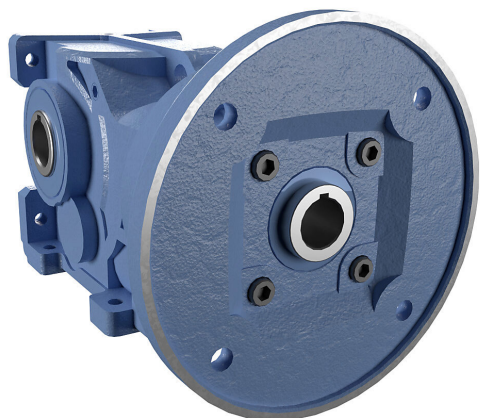


HBR-47-010-C Cut Sheet



IronHorse heavy-duty helical bevel gearbox, 10:1 ratio, 182/4TC-Face input, hollow, 1.375in diameter output shaft, nominal 5hp at 1.29 SF, 2097 lb-in mechanical output torque, Type-47 frame, cast iron housing, vertical or horizontal mount.

For complete product information, please see this item on our store at the following link:



<https://www.automationdirect.com/pn/HBR-47-010-C>

Technical Specifications

Brand	IronHorse
Item	Gearbox
Application	General purpose
Duty Rating	Heavy-duty
Gearbox Type	Helical bevel
Gear Ratio	10:1
Speed Rating	1750rpm input / 176rpm output
Input Configuration	182/4TC-Face
Input Power Rating	Nominal 5hp at 1.29 SF
Output Configuration	Hollow

Gearbox Output Shaft Diameter	1.375in
Mechanical Output Torque	2097 lb-in
Frame	Type-47
Housing Material	Cast iron
Mounting	Vertical or horizontal
Finish	Anti-corrosion primer and paint
Lubrication Type	Pre-filled with HD320 mineral oil
Oil Seal Type	Double-lip

Agency Approvals

UL Listed File #	none
UL Recognized File #	none
UL Hazardous File #	none
CE	None
CSA File #	none
RoHS Status	No
EU REACH	View EU REACH document

Dimensional Drawings



2D Drawing PDF Link:
<https://cdn.automationdirect.com/static/drawings/HBR-47-010-C.pdf>
See store item page for other formats.