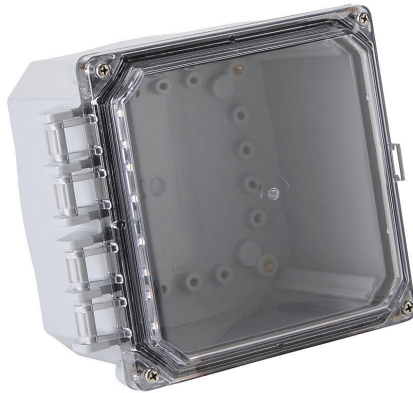


# H6064HCF-6P-P10 Cut Sheet



Integra Premium series enclosure, NEMA 1/2/3/3R/3S/4/4X/6/6P/12/13, 6 x 6 x 4in (HxWxD), wall mount, polycarbonate, light gray, gloss finish, clear polycarbonate hinged screw cover.

For complete product information, please see this item on our store at the following link:



<https://www.automationdirect.com/pn/H6064HCF-6P-P10>

## Technical Specifications

<b>Brand</b>	Integra
<b>Item</b>	Enclosure
<b>Series</b>	Premium
<b>Subpanel</b>	Purchase subpanel separately
<b>Slope Top</b>	No
<b>NEMA Rating</b>	1/2/3/3R/3S/4/4X/6/6P/12/13
<b>IP Rating</b>	IP68
<b>Nominal Enclosure Dimensions</b>	6 x 6 x 4in (HxWxD)
<b>Enclosure Height</b>	6.54in
<b>Enclosure Width</b>	6.54in
<b>Enclosure Depth</b>	4.82in

<b>Mounting</b>	Wall
<b>Integral Mounting Flange</b>	No
<b>Dual Access</b>	No
<b>Knockouts</b>	No
<b>Material</b>	Polycarbonate
<b>Color</b>	Light gray
<b>Finish</b>	Gloss
<b>Cover Type</b>	Clear polycarbonate hinged screw cover
<b>Padlockable</b>	No
<b>Keylocking</b>	No
<b>Includes</b>	(2) mounting flanges

## Agency Approvals

<b>UL Listed File #</b>	E207562
<b>UL Recognized File #</b>	None
<b>UL Hazardous File #</b>	None
<b>CE</b>	<a href="#">View CE declarations</a>
<b>CSA File #</b>	None
<b>RoHS Status</b>	Yes (See CE Doc)
<b>EU REACH</b>	<a href="#">View EU REACH document</a>

## Dimensional Drawings



2D Drawing PDF Link:  
<https://cdn.automationdirect.com/static/drawings/H6064HCF-6P-P10.pdf>  
See store item page for other formats.