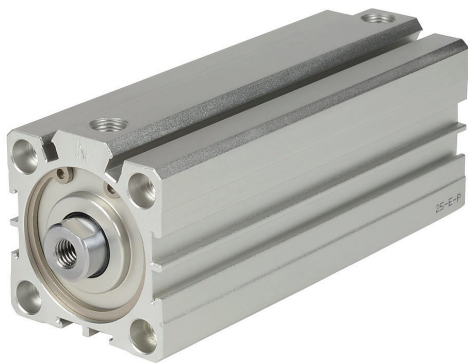


H40M100MD-M Cut Sheet



NITRA pneumatic cylinder, compact extruded, 40mm bore, 16mm rod diameter, 100mm stroke, double acting, magnetic piston, tapped end caps mount.

For complete product information, please see this item on our store at the following link:



<https://www.automationdirect.com/pn/H40M100MD-M>

Technical Specifications

Brand	NITRA
Item	Cylinder
Working Fluid	Air or inert gas
Cylinder Type	Compact extruded
Bore Diameter	40mm
Stroke	100mm
Port Size	1/8in female NPT
Mounting	Tapped end caps
Action Type	Double acting
Magnetic Piston	Magnetic piston
Body Material	Anodized aluminum
Rod Material	Chrome-plated steel
Rod Diameter	16mm
Rod Thread Size	M8x1.25

Agency Approvals

UL Listed File #	None
UL Recognized File #	None
UL Hazardous File #	None
CE	None
CSA File #	None
RoHS Status	No
EU REACH	View EU REACH document

Dimensional Drawings



2D Drawing PDF Link:
<https://cdn.automationdirect.com/static/drawings/H40M100MD-M.pdf>
See store item page for other formats.