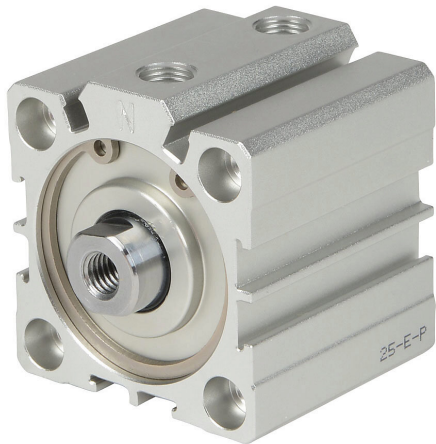


# H40M010MD-M Cut Sheet



NITRA pneumatic cylinder, compact extruded, 40mm bore, 16mm rod diameter, 10mm stroke, double acting, magnetic piston, tapped end caps mount.

For complete product information, please see this item on our store at the following link:



<https://www.automationdirect.com/pn/H40M010MD-M>

## Technical Specifications

<b>Brand</b>	NITRA
<b>Item</b>	Cylinder
<b>Working Fluid</b>	Air or inert gas
<b>Cylinder Type</b>	Compact extruded
<b>Bore Diameter</b>	40mm
<b>Stroke</b>	10mm
<b>Port Size</b>	1/8in female NPT
<b>Mounting</b>	Tapped end caps
<b>Action Type</b>	Double acting
<b>Magnetic Piston</b>	Magnetic piston
<b>Body Material</b>	Anodized aluminum
<b>Rod Material</b>	Chrome-plated steel
<b>Rod Diameter</b>	16mm
<b>Rod Thread Size</b>	M8x1.25

## Agency Approvals

<b>UL Listed File #</b>	None
<b>UL Recognized File #</b>	None
<b>UL Hazardous File #</b>	None
<b>CE</b>	None
<b>CSA File #</b>	None
<b>RoHS Status</b>	No
<b>EU REACH</b>	<a href="#">View EU REACH document</a>

## Dimensional Drawings



2D Drawing PDF Link:  
<https://cdn.automationdirect.com/static/drawings/H40M010MD-M.pdf>  
See store item page for other formats.