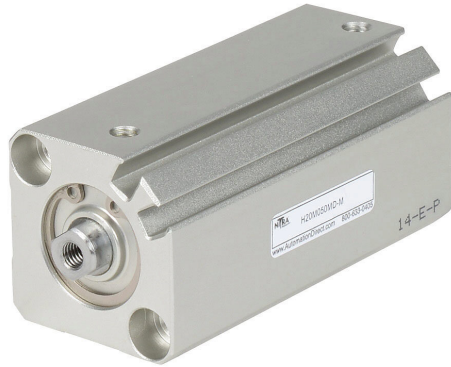


# H20M050MD-M Cut Sheet



NITRA pneumatic cylinder, compact extruded, 20mm bore, 10mm rod diameter, 50mm stroke, double acting, magnetic piston, tapped end caps mount.

For complete product information, please see this item on our store at the following link:



<https://www.automationdirect.com/pn/H20M050MD-M>

## Technical Specifications

|                        |                          |
|------------------------|--------------------------|
| <b>Brand</b>           | NITRA                    |
| <b>Item</b>            | Cylinder                 |
| <b>Working Fluid</b>   | Air                      |
| <b>Cylinder Type</b>   | Compact extruded         |
| <b>Bore Diameter</b>   | 20mm                     |
| <b>Stroke</b>          | 50mm                     |
| <b>Port Size</b>       | M5 X 0.8 female threaded |
| <b>Mounting</b>        | Tapped end caps          |
| <b>Action Type</b>     | Double acting            |
| <b>Magnetic Piston</b> | Magnetic piston          |
| <b>Body Material</b>   | Anodized aluminum        |
| <b>Rod Material</b>    | Chrome-plated steel      |
| <b>Rod Diameter</b>    | 10mm                     |
| <b>Rod Thread Size</b> | M5x0.8                   |

## Agency Approvals

|                             |  |
|-----------------------------|--|
| <b>UL Listed File #</b>     | None                                   |
| <b>UL Recognized File #</b> | None                                   |
| <b>UL Hazardous File #</b>  | None                                   |
| <b>CE</b>                   | None                                   |
| <b>CSA File #</b>           | None                                   |
| <b>RoHS Status</b>          | No                                     |
| <b>EU REACH</b>             | <a href="#">View EU REACH document</a> |