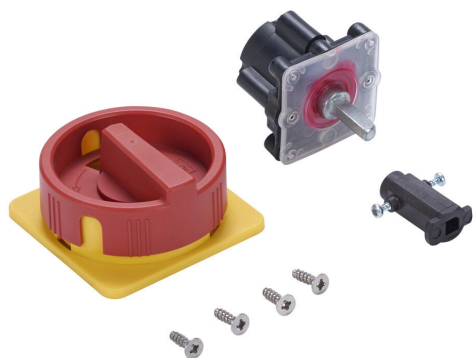


H05R Cut Sheet



Merz rotary handle, round, red/yellow, external front mount, 2-position, lockable in OFF only, NEMA 4/4X. For use with Merz ML1 switch bodies in DIN rail applications with hinged doors. Shaft adapter and mounting screws included.

For complete product information, please see this item on our store at the following link:



<https://www.automationdirect.com/pn/H05R>

Technical Specifications

Brand	Merz
Item	Handle
Handle Type	Rotary
Handle Style	Round
Color	Red/yellow
Mounting	External front
Number Of Positions	2
Lockable Positions	OFF only
Defeatable	No
NEMA Rating	4/4X
Test Function	No
For Use With	Merz ML1 switch bodies in DIN rail applications with hinged doors
Includes	Shaft adapter and mounting screws
Additional Information	Extension shaft optional, purchase separately

Agency Approvals

UL Listed File #	E195426
UL Recognized File #	None
UL Hazardous File #	None
CSA File #	None
RoHS Status	No
EU REACH	View EU REACH document

Dimensional Drawings



2D Drawing PDF Link:
<https://cdn.automationdirect.com/static/drawings/H05R.pdf>
See store item page for other formats.