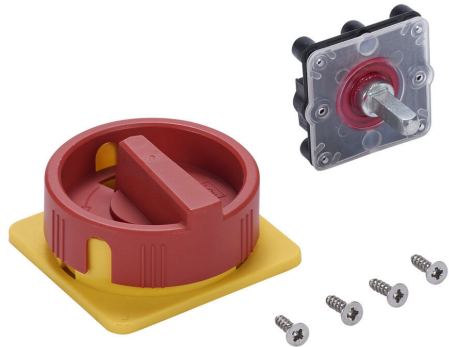


# H01R Cut Sheet



Merz rotary handle, round, red/yellow, external front mount, 2-position, lockable in OFF only, NEMA 4/4X. For use with Merz ML1 switch bodies in DIN rail applications with non-hinged doors. Shaft adapter and mounting screws included.

For complete product information, please see this item on our store at the following link:



<https://www.automationdirect.com/pn/H01R>

## Technical Specifications

<b>Brand</b>	Merz
<b>Item</b>	Handle
<b>Handle Type</b>	Rotary
<b>Handle Style</b>	Round
<b>Color</b>	Red/yellow
<b>Mounting</b>	External front
<b>Number Of Positions</b>	2
<b>Lockable Positions</b>	OFF only
<b>Defeatable</b>	No
<b>NEMA Rating</b>	4/4X
<b>Test Function</b>	No
<b>For Use With</b>	Merz ML1 switch bodies in DIN rail applications with non-hinged doors
<b>Includes</b>	Shaft adapter and mounting screws
<b>Additional Information</b>	Extension shaft optional, purchase separately

## Agency Approvals

<b>UL Listed File #</b>	E195426
<b>UL Recognized File #</b>	None
<b>UL Hazardous File #</b>	None
<b>CSA File #</b>	None
<b>RoHS Status</b>	No
<b>EU REACH</b>	<a href="#">View EU REACH document</a>