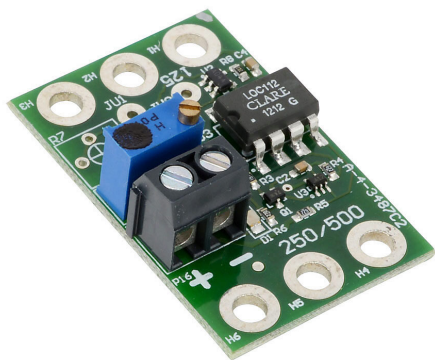


GSDA-AI-A Cut Sheet



IronHorse GSD series analog input module, 1-channel, current, isolated, input current signal range(s) of 4-20 mA.

For complete product information, please see this item on our store at the following link:



<https://www.automationdirect.com/pn/GSDA-AI-A>

Technical Specifications

Brand	IronHorse
Item	Input module
I/O Module Type	Analog
Series	GSD
Number Of Input Channels	1
Input Signal Type(s)	Current
Analog Input Type	Sinking
Number of Isolated Commons	1
Isolated Channels	Yes
Input Current Signal Range	4-20 mA
For Use With	Open frame GSD4, GSD5 and GSD6 DC drives

Agency Approvals

UL Listed File #	None
UL Recognized File #	None
UL Hazardous File #	None
CE	None
CSA File #	None
RoHS Status	No
EU REACH	View EU REACH document