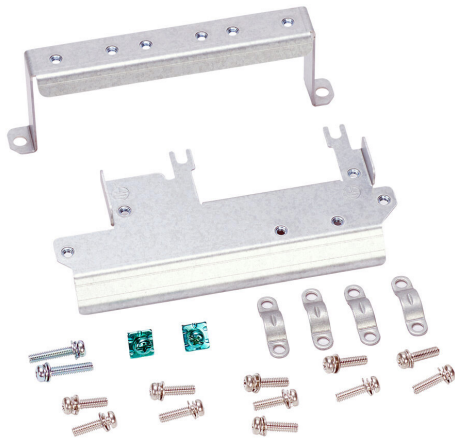


GS20XA-EPC Cut Sheet



DURApulse GS20X series EMC shield plate, for use with GS20X series C frame AC drives. Allows motor lead shields to be grounded at the drive.

For complete product information, please see this item on our store at the following link:



<https://www.automationdirect.com/pn/GS20XA-EPC>

Technical Specifications

Brand	DURApulse
Item	EMC shield plate
Series	GS20X
Replacement	No
For Use With	GS20X series C frame AC drives
Additional Information	Allows motor lead shields to be grounded at the drive

Agency Approvals

UL Listed File #	E198015
UL Recognized File #	None
UL Hazardous File #	None
CE	View CE declarations
CSA File #	none
RoHS Status	Yes (See CE Doc)
EU REACH	View EU REACH document