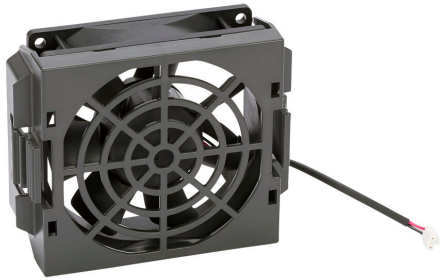


GS20A-FAN-E Cut Sheet



DURApulse GS20 series main cooling fan, replacement, 92 x 92 x 28mm, 12 VDC. For use with GS20 series E frame AC drives. Electrical connector included.

For complete product information, please see this item on our store at the following link:



<https://www.automationdirect.com/pn/GS20A-FAN-E>

Technical Specifications

Brand	DURApulse
Item	Cooling fan
Fan Type	Main
Series	GS20
Replacement	Yes
Size	92 x 92 x 28mm
Voltage Rating	12 VDC
For Use With	GS20 series E frame AC drives
Includes	Electrical connector

Agency Approvals

UL Listed File #	E198015
UL Recognized File #	None
UL Hazardous File #	None
CE	View CE declarations
CSA File #	none
RoHS Status	Yes (See CE Doc)
EU REACH	View EU REACH document