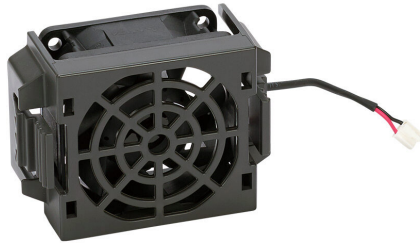


# GS20A-FAN-D Cut Sheet



DURApulse GS20 series main cooling fan, replacement, 60 x 60 x 25mm, 12 VDC. For use with GS10 and GS20 series D frame AC drives. Electrical connector included.

For complete product information, please see this item on our store at the following link:



<https://www.automationdirect.com/pn/GS20A-FAN-D>

## Technical Specifications

|                       |  |
|-----------------------|--|
| <b>Brand</b>          | DURApulse                              |
| <b>Item</b>           | Cooling fan                            |
| <b>Fan Type</b>       | Main                                   |
| <b>Series</b>         | GS20                                   |
| <b>Replacement</b>    | Yes                                    |
| <b>Size</b>           | 60 x 60 x 25mm                         |
| <b>Voltage Rating</b> | 12 VDC                                 |
| <b>For Use With</b>   | GS10 and GS20 series D frame AC drives |
| <b>Includes</b>       | Electrical connector                   |

## Agency Approvals

|                             |  |
|-----------------------------|--|
| <b>UL Listed File #</b>     | E198015                                |
| <b>UL Recognized File #</b> | None                                   |
| <b>UL Hazardous File #</b>  | None                                   |
| <b>CE</b>                   | <a href="#">View CE declarations</a>   |
| <b>CSA File #</b>           | none                                   |
| <b>RoHS Status</b>          | Yes (See CE Doc)                       |
| <b>EU REACH</b>             | <a href="#">View EU REACH document</a> |