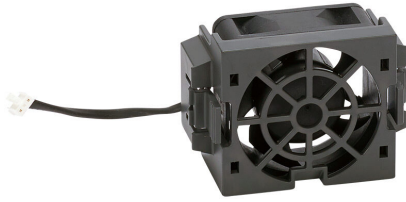


GS20A-FAN-C Cut Sheet



DURApulse GS20 series main cooling fan, replacement, 50 x 50 x 20mm, 12 VDC. For use with GS10 and GS20 series C frame AC drives. Electrical connector included.

For complete product information, please see this item on our store at the following link:



<https://www.automationdirect.com/pn/GS20A-FAN-C>

Technical Specifications

| | |
|-----------------------|--|
| Brand | DURApulse |
| Item | Cooling fan |
| Fan Type | Main |
| Series | GS20 |
| Replacement | Yes |
| Size | 50 x 50 x 20mm |
| Voltage Rating | 12 VDC |
| For Use With | GS10 and GS20 series C frame AC drives |
| Includes | Electrical connector |

Agency Approvals

| | |
|-----------------------------|--|
| UL Listed File # | E198015 |
| UL Recognized File # | None |
| UL Hazardous File # | None |
| CE | View CE declarations |
| CSA File # | none |
| RoHS Status | Yes (See CE Doc) |
| EU REACH | View EU REACH document |