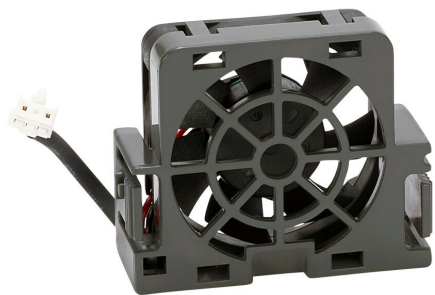


GS20A-FAN-B Cut Sheet



DURApulse GS20 series main cooling fan, replacement, 40 x 40 x 15mm, 12 VDC. For use with GS10, GS20 and GS30 series B frame AC drives. Electrical connector included.

For complete product information, please see this item on our store at the following link:



<https://www.automationdirect.com/pn/GS20A-FAN-B>

Technical Specifications

Brand	DURApulse
Item	Cooling fan
Fan Type	Main
Series	GS20
Replacement	Yes
Size	40 x 40 x 15mm
Voltage Rating	12 VDC
For Use With	GS10, GS20 and GS30 series B frame AC drives
Includes	Electrical connector

Agency Approvals

UL Listed File #	E198015
UL Recognized File #	None
UL Hazardous File #	None
CE	View CE declarations
CSA File #	none
RoHS Status	Yes (See CE Doc)
EU REACH	View EU REACH document

Dimensional Drawings



2D Drawing PDF Link:
<https://cdn.automationdirect.com/static/drawings/GS20A-FAN-B.pdf>
See store item page for other formats.