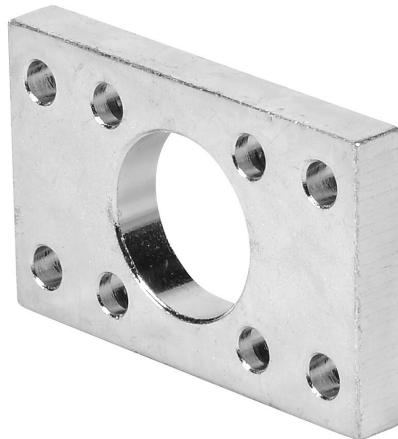


GFL-32MM Cut Sheet



NITRA flange mount plate, zinc plated steel. For use with 32mm bore G-series cylinders.

For complete product information, please see this item on our store at the following link:



<https://www.automationdirect.com/pn/GFL-32MM>

Technical Specifications

Brand	NITRA
Item	Flange mount plate
Replacement	No
Material	Zinc plated steel
For Use With	32mm bore G-series cylinders

Agency Approvals

UL Listed File #	None
UL Recognized File #	None
UL Hazardous File #	None
CE	None
CSA File #	None
RoHS Status	No
EU REACH	View EU REACH document