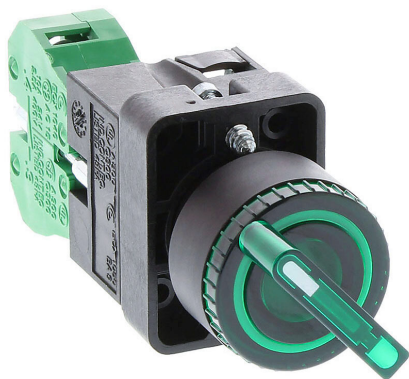


GCX3242-120L Cut Sheet



AutomationDirect selector switch, 22mm, 2-position, spring return from right, LED illuminated, (1) N.O. contact(s), plastic base, plastic bezel, Operator: green, knob, 30mm, round, plastic, 120 VAC/VDC, full voltage.

For complete product information, please see this item on our store at the following link:



<https://www.automationdirect.com/pn/GCX3242-120L>

Technical Specifications

Brand	AutomationDirect
Item	Selector switch
Barrel Size	22mm
IP Rating	IP65
Number Of Positions	2
Action	Spring return from right
Bulb Type	LED illuminated
Contact Type	(1) N.O.
Base Material	Plastic

Bezel Material	Plastic
Operator Color	Green
Operator Type	Knob
Operator Size	30mm
Operator Shape	Round
Operator Material	Plastic
Voltage Rating	120 VAC/VDC
Voltage Regulation	Full voltage

Agency Approvals

UL Listed File #	e189258
UL Recognized File #	None
UL Hazardous File #	None
CE	View CE declarations
CSA File #	66746
RoHS Status	Yes (See CE Doc)
EU REACH	View EU REACH document

Dimensional Drawings



2D Drawing PDF Link:
<https://cdn.automationdirect.com/static/drawings/GCX3242-120L.pdf>
See store item page for other formats.