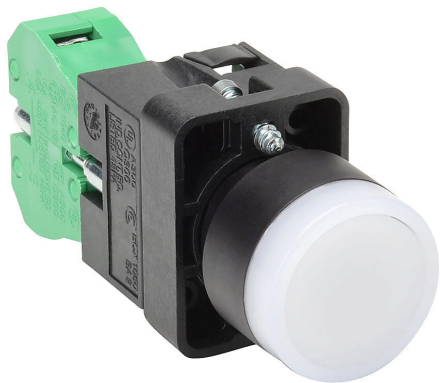


GCX3206-120 Cut Sheet



AutomationDirect pushbutton, IP65, 22mm, momentary, incandescent illuminated, (1) N.O. contact(s), plastic base, plastic bezel, plastic ring, Operator: white, flush, 30mm, round, plastic, 120 VAC/VDC, full voltage.

For complete product information, please see this item on our store at the following link:



<https://www.automationdirect.com/pn/GCX3206-120>

Technical Specifications

Brand	AutomationDirect
Item	Pushbutton
IP Rating	IP65
Barrel Size	22mm
Action	Momentary
Bulb Type	Incandescent illuminated
Contact Type	(1) N.O.
Base Material	Plastic
Bezel Material	Plastic

Operator Protection	Plastic ring
Operator Color	White
Operator Type	Flush
Operator Size	30mm
Operator Shape	Round
Operator Material	Plastic
Voltage Rating	120 VAC/VDC
Voltage Regulation	Full voltage

Agency Approvals

UL Listed File #	e189258
UL Recognized File #	None
UL Hazardous File #	None
CE	View CE declarations
CSA File #	66746
RoHS Status	Yes (See CE Doc)
EU REACH	View EU REACH document

Dimensional Drawings



2D Drawing PDF Link:
<https://cdn.automationdirect.com/static/drawings/GCX3206-120.pdf>
See store item page for other formats.